

**enhanced**  
**vision**

pebble™ **HD**



Screen Size

4.3"

**Users Manual**

---

Congratulations on your purchase of the Pebble HD from Enhanced Vision. The Pebble HD is a handheld electronic video magnifier that you can take anywhere. Weighing less than 8 ounces, Pebble HD features a uniquely-designed folding handle and includes both near-viewing and table reading modes. Small enough to fit in your pocket or purse, the Pebble HD is the ideal companion to provide magnification, on the go.

With the Pebble HD, you can easily read bank statements, coupons, prescriptions, restaurant menus, sign checks - anywhere you need portable magnification. The Pebble HD provides hours of low vision enhancement.

Featuring a built-in, LCD screen (4.3"), the Pebble HD allows you to magnify images up to 20 times. A built in Freeze-Frame feature allows you to capture any still image and adjust magnification. Six different viewing modes allow you to choose alternate color combinations based on your personal preference.

The Pebble HD includes a convenient carrying case and comes with a 2 year warranty.

Product enhancements and revisions are an integral part of what we do here at Enhanced Vision. Please visit – <http://www.enhancedvision.com/low-vision-product-line.html>

and select your Enhanced Vision Product. You will find the most up-to-date version of the User Manual at the bottom of the page.

---

## FCC COMPLIANCE NOTICE

This device complies with Part 15 of the FCC Rules. Operation is subject to the following two conditions: (1) This device may not cause harmful interference, and (2) this device must accept any interference received, including interference that may cause undesired operation.

This equipment has been tested and found to comply with the limits for a Class B digital device, pursuant to Part 15 of the FCC Rules. These limits are designed to provide reasonable protection against harmful interference in a residential installation. This equipment generates, uses, and can radiate radio frequency energy and, if not installed and used in accordance with the instructions, may cause harmful interference to radio communications. However, there is no guarantee that interference will not occur in a particular installation. If this equipment does cause harmful interference to radio or television reception, which can be determined by turning the equipment off and on, the user is encouraged to try to correct the interference by one or more of the following measures:

- Reorient or relocate the receiving antenna.
- Increase the separation between the equipment and receiver.
- Connect the equipment into an outlet on a circuit different from that to which the receiver is connected.
- Consult the dealer or an experienced radio/TV technician for help.

Unauthorized changes or modification to this system can void the user's authority to operate this equipment.

If your Low Vision device has an option to connect to a TV, it must be used with shielded interface cables in order to meet FCC emissions limits for Class B digital devices. It is the responsibility of the user to use the shielded interface cables supplied with the equipment.

---

## **Chapter 1: Safety Precautions**

General guidelines . . . . .	6
Transportation . . . . .	7
Care & Maintenance . . . . .	7

## **Chapter 2: Package Contents & Controls**

Package Contents & Controls . . . . .	8-9
---------------------------------------	-----

## **Chapter 3: Using the Pebble HD**

Connecting the Power supply. . . . .	10
Power Supply. . . . .	11
Charging the Battery. . . . .	12
Battery Charger Status Indicators. . . . .	13
Turning the Power On/Off. . . . .	14
Entering the Menu & Adjusting the image size. . .	15
Viewing Modes / Deluxe & Basic. . . . .	16
Freezing an image (Snapshot function) . . . . .	17
Saving, Gallery & Deleting Images. . . . .	18-19
Turning LED On/Off . . . . .	20
Using the Clock & Time/Date. . . . .	21
Adjusting the Handle & Positions . . . . .	22-24

---

**Chapter 4: Using the Menus**

User & Product Settings Menu. . . . . 25

Factory Settings & Image Gallery. . . . . 26

Setting Clock Time/Date . . . . . 27

Connecting to your PC. . . . . 28

Product Information & Master Reset . . . . . 29

**Chapter 5: Troubleshooting**

Troubleshooting Tips. . . . . 30-31

**Chapter 6: Specifications**

System Specifications . . . . . 32-33

**Chapter 7: Warranty Information**

Warranty Policy . . . . . 34-35

Service Process. . . . . 35

**Chapter 8: Other Enhanced Vision Products**

EV Products . . . . . 36-38

Accessories & Pebble HD Stand . . . . . 38-39

Contact Information. . . . . 40

## **SAFETY PRECAUTIONS**

---

For your safety and to obtain the most benefit and life from the Pebble HD, please read these important safety precautions carefully.

### **General guidelines for use:**

- Follow all warnings, cautions, and instructions marked on the product.
- Use care when using the Pebble HD outdoors— it should NOT be exposed to extreme or rapid changes in temperature or humidity.
- Do not place the Pebble HD near a radiator, heater or areas exposed to long hours of direct sunlight.
- Prevent the risk of electrical shock by NOT attempting to disassemble the unit. Please refer all service to an authorized repair facility.
- Do not use the Pebble HD in, near, or around water. The Pebble HD is not designed to offer protection against contact with liquids of any kind.
- Do not use the Pebble HD during an electrical storm, lightning, or other severe weather.
- Do not use the Pebble HD near open flames, flammable materials or liquids.

---

## **Transportation:**

- Pebble HD comes with a convenient carrying case for transport. To prevent the unit from being accidentally dropped and damaged, always return the Pebble HD to the carrying case while not in use.
- This product is intended to be used as a portable device. Please use care when connecting/disconnecting cables and accessories.

## **Care & Maintenance:**

- Always turn the power OFF on the Pebble HD when the system is not in use.
- If needed, clean the surface of the Pebble HD with a soft damp cloth or an electrostatic dusting wipe. DO NOT use liquid cleaners on the plastic surfaces. No additional methods of sterilization or cleaning are recommended or required.

## **Susceptibility to Interference:**

There may be temporary performance degradation of the Pebble HD when subjected to a strong magnetic and/or radio-frequency field, electrostatic discharge or transient electrical noise. An electrostatic discharge (caused by static electricity) may cause image distortion. If this happens, switch the unit off and try moving the unit to a different location.

## PACKAGE CONTENTS & CONTROLS

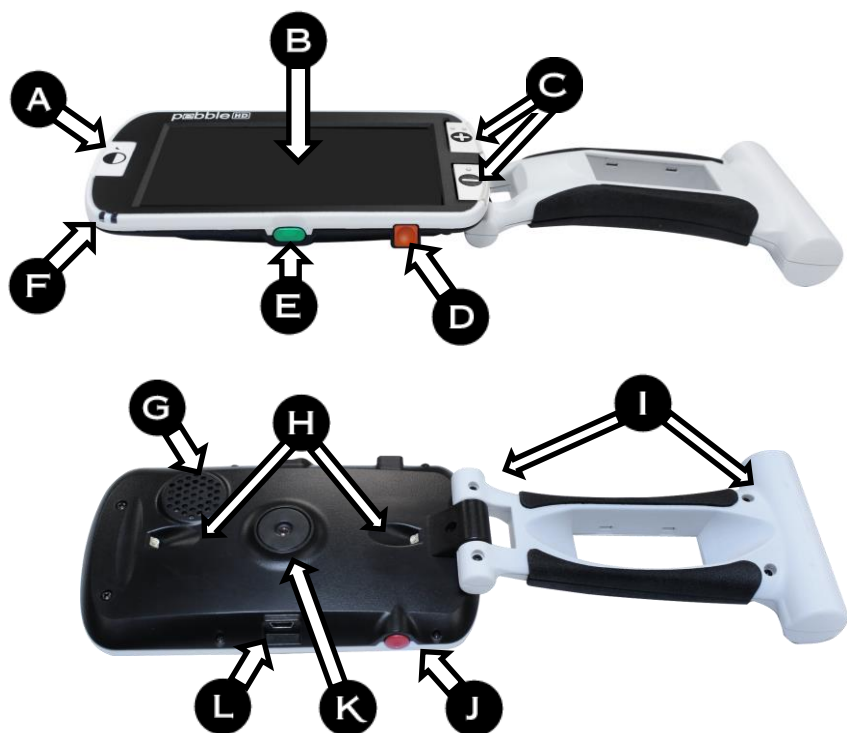
---

Please refer to the illustrations on the next page to identify the package contents and controls of your Pebble HD. In addition to this users guide, you'll find the following items inside the box:

1. **Pebble HD**
2. **Lens Cloth**
3. **Carrying Case with belt clip**
4. **AC adaptor power supply (See Page 10)**  
*(Style may vary depending on country)*
5. **USB to Mini Power Cable (used for Domestic power supply and Firmware Upgrade)**
6. **Pebble HD Stand (not pictured) available to order**

Please note the locations of the following controls on your Pebble HD:

- A. **Viewing Mode button (Mode)**
- B. **LCD Screen (4.3")**
- C. **Zoom buttons (Magnification)**
- D. **Gallery- (ORANGE button)**
- E. **Power Button (On/Off) - (GREEN button)**
- F. **Status LED's**
- G. **Speaker**
- H. **LED Lighting**
- I. **Foldable Handle**
- J. **Freeze-frame (Snapshot) button – (RED button)**
- K. **Camera Lens**
- L. **Power Supply Input Port (Mini-USB Connector)**



Your Pebble HD can be powered using:

- The included AC adaptor/power supply
- Integrated rechargeable battery (included)

Your Pebble HD is packaged with the integrated battery partially charged. We highly recommend that you plug your Pebble HD into wall power in order to fully charge the integrated battery prior to using the device for the first time. (See Page 13 for charging indicator light status)

**Note:** When the Pebble HD is On and an AC Adapter, or USB cable (connected to a PC), is connected to the Pebble HD an 'Hour Glass' will appear. During this time (approximately 15-20 seconds) the Pebble HD will determine which type of connection has been made.



- When the AC Adapter is connected - the Pebble HD will go into 'Live' mode.
- When a USB Cable is connected (also connected to a PC) - a USB Symbol will appear.



### Connecting the AC adaptor/power supply

Use the following procedure to connect the Pebble HD to the AC adaptor/power supply

1. Connect the tip of the included AC Adaptor/power supply to the Mini-USB connector port. (See Figure 1)
2. Plug in the remaining end of the AC Adaptor/power supply to an available AC wall outlet or USB port on your PC. (See Figure 2)



*Figure 1*



*Figure 2*

---

## POWER SUPPLY

Included within your Pebble HD box (International orders ONLY) is multiple inserts for the outlets of various countries.

1. To install choose the correct insert for your country (See figure 1).
2. Find the tab that is located at the top of your insert, slide at an angle into the main power supply, and push down until it clicks (See figure 2).
3. You may now proceed to plug this into an available outlet and begin to charge your Pebble HD magnifier. To offer additional protection during an electrical storm, a surge protector may also be used and is recommended.



*Figure 1*



*Figure 2*

---

## CHARGING THE BATTERY

### Using a Rechargeable Battery

Your Pebble HD includes a rechargeable battery that can be continuously charged inside the Pebble HD, even while the unit is in operation. It is recommended to leave the unit connected with the included AC adaptor when the unit is not in use to maintain a continuous charge on the battery. This way, your Pebble HD will always be ready for portable use. It is not possible to overcharge the included battery.

### Important Points When Using Battery Power

- ▶ The rechargeable battery should be fully charged prior to the first use.
- ▶ When fully charged your Pebble HD should last up to 2.5 to 3.0 hours battery life depending on the LCD Brightness setting.
- ▶ An On-Demand Battery indicator is available by pressing [MODE] & then [Zoom -] for 2 seconds.

### Battery Charging Procedure

To charge the Lithium Ion battery inside your Pebble HD, simply connect the included AC adaptor/power supply as described on page 10. You can continue to use the Pebble HD even while the battery is being charged.

### Charging the Pebble HD when not in use (Standby)

To charge the Pebble HD when it is not in use:

- Press the **Green** [POWER] button to enter 'Standby' mode after connecting the AC Adaptor/power supply (or USB Cable to a PC). To return to normal operation 'Press and release' the Green [POWER] button again.

# Built-In Battery Charger Status Indicators

Your Pebble HD has two small indicator lights (LEDs) located on the side of the unit. The LEDs indicate the current power state and charge status of the batteries (see Figure 1).

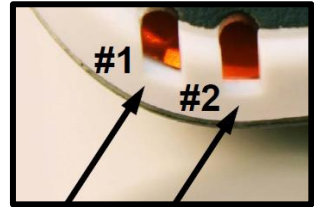


Figure 1

Refer to the table below for more information regarding the meaning of each LED indicator light:

**Black Background** = Blinking

LED # 1 BLUE	LED # 2 AMBER	Power Source	Meaning
ON	OFF	AC	AC plugged & Battery Charging
ON	ON	AC	AC plugged & Battery is full
OFF	ON	Battery	Battery good/full
OFF	ON	Battery	Battery low
ON	OFF	Battery	Standby
OFF	OFF	Battery	Unit is OFF

*Note: When your Pebble HD battery is getting low, approximately 15 minutes before shutoff, a ‘chime’ will sound, with a battery icon displayed for 2 seconds.*

## Battery Charge Indicator

Once the Pebble HD powers on, and when it comes out of ‘Standby’ mode, a Battery Charge Status indicator will appear for 2 seconds (during this time all button functions are disabled).



*(Pebble HD battery at full charge)*



*(Pebble HD with low charge will power off after 3-5 seconds if not connected to adaptor)*

---

## Turning the Power On/Off

Use the following procedure to turn the power of your Pebble HD On or Off:

1. Find the recessed **Green** [POWER] button.  
(See Figure 1)

2. 'Press and hold' the **Green** [POWER] button for 1 second or more to turn the Pebble HD on. After the Pebble HD 'startup' sound is heard an image will appear on the LCD display.



Figure 1

To turn off the Pebble HD, press and hold the [POWER] button again for 2 seconds or more. A short, confirmation tone will be heard when the unit is powered Off.

*Note: To put the Pebble HD into 'Standby' mode, once powered on, 'Press and release' the [POWER] button. To return to 'live' mode 'Press and release' the [POWER] button again. Disconnecting the Adapter, or USB connection, from the Pebble HD when it is in 'Standby' mode will cause the Pebble HD to power off.*

## Button Combinations

*Throughout the User Manual there will be 'button combinations' (i.e. Press the [MODE] and **Red** [FREEZE] buttons). This indicates that the buttons should be pressed simultaneously.*

---

## Entering the Menu

The Pebble HD has configurable options that can be modified by using the System Menu. You may enter System Menu by pressing [MODE] + [FREEZE]. To navigate press [Zoom + or -] and the Yellow Highlight will move to your selection.

- The Red [FREEZE] Button is used for confirming selections or advancing deeper into the menus.
- The [MODE] Button is used for canceling Selections or returning to previous menus.

## Adjusting the Image Size

Use the following procedure to adjust the magnification (size) of the image on the LCD.

1. ZOOM buttons (See *Figure 1*).
2. Press the [+] ZOOM button to increase the magnification size on the LCD.
3. Press the [-] ZOOM button to decrease the magnification size on the LCD.



*Figure 1*

There are 5 'fixed' zoom levels on the Pebble HD. Pressing and Holding the [+] or [-] ZOOM button for more than 1 second activates a 'continuous zoom' mode.

---

## Viewing Modes:

Use the following procedure to select the viewing mode of the image on the LCD display:

By pressing the [MODE] button (See Figure 1) you can cycle through the 7(if enabled) pre-set viewing modes. To change your color selects to any of the 28 available enter the System Menu. Then while on the first highlight Enter User Settings >> Display >> Preferred Modes which will have all of your available options..Menu items are shown on page 25. Use the [Freeze] button to confirm.

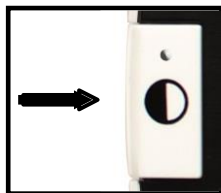


Figure 1

Note: Hold [MODE] for 2 seconds to return back to 'Full Color' mode. The 'Color Mode Selection' menu allows all of the Viewing modes, except 'Full Color' (factory default), to be temporarily disabled (See color modes below)

*There are two configurable color Presets referred to as Deluxe and Basic Factory Settings. The difference between these options is shown below.*

### Deluxe Color Modes:

- Full Color Image (Factory Default – always ON)
- Positive Image (Factory = White background / Black text)
- Negative Image (Factory = Black background / White text)
- Color Select 1 (Factory = Green On Black)
- Color Select 2 (Factory = Yellow On Black)
- Color Select 3 (Factory = Yellow On Blue)
- Black and White Image

### Basic Color Modes:

- Full Color Image (Factory Default – always ON)
- Black and White Image
- Positive Image (Factory = White background / Black text)
- Negative Image (Factory = Black background / White text)

---

## Freezing an Image (Snapshot function)

If desired, you can take a snapshot (Freeze) of an image on the display. You can also adjust the size and change viewing modes after freezing an image. This feature is quite useful for reading price tags, prescriptions or other information that may need to be temporarily captured.

Use the following procedure to take a snapshot (Freeze) of the image on the display:

1. Press the **Red** [FREEZE] button (See Figure 1) to capture the image. Pebble HD will make a “Camera shutter” sound when the image is captured and the LED lights will turn off. After capturing the image you can adjust the size or ‘enabled’ viewing modes as desired.
2. Press the **Red** [FREEZE] button again to exit and resume normal operation. Turning off the power of your Pebble HD will also clear the frozen image.



*Figure 1*

## Saving a Snapshot

You can also save a ‘snapshot’ image (approximately 300) on the Pebble HD to view at a later time.

After freezing the image, press and hold the **[FREEZE]** button for 2-3 seconds. You will see *Figure 2* Saving Icon which will be displayed and the Pebble HD will then return to normal operation mode when save is complete.



*Figure 2*

---

## Recalling a Saved Snapshot

Once you have a saved snapshot image you can ‘recall’ it and view it from the Image Gallery (See *Figure 1*). To recall a saved snapshot image:

1. Press and hold the Orange Button [Gallery] for 3 seconds – the last saved snapshot will be displayed (**in this mode LED lights are off**).



*Figure 1*

2. To view the next/previous saved snapshot:  
Use the **[ZOOM +]** to move up or the **[ZOOM -]** to move down.
3. To select the image press the Red **[FREEZE]** button.
  - You can increase/decrease Zoom using **[+/-]**
  - Change Viewing Modes by pressing **[MODE]**
  - To Delete an Image press and hold the **[FREEZE]** button for more than 2 Seconds.
4. To go back to the Image Gallery press the **[FREEZE]** button
5. To resume normal operation press the **[GALLERY]** for **3 seconds if you entered from Live screen** or **[MODE]** button if you entered via menu.



---

## Deleting a Saved Snapshot/All Snapshots

You can delete images from your Gallery by either removing them one by one or deleting all images at once. Use the instructions below for both operations.

### Remove a Single Image

- Enter the Gallery from the System Menu or Live Screen
- Press and Hold Orange [Gallery] Button to enter into the Gallery from the Live Camera Preview
- When Viewing an Image Press the [Freeze] button for more than 2 seconds to delete an individual Snapshot.
- The waste bin icon shown in Figure 1 will display indicating that the image has been deleted.



### Remove All Images:

- Navigate to the Entry Marked “Image Gallery” at the bottom of the system menu which is mentioned in more detail on page 25
- You will have two options on this screen:
  - **Display Images** - Pebble HD enters Gallery Mode and you view your pictures normally
  - **Delete All Images** – a confirmation message will pop up with CANCEL or CONFIRM. Selecting CONFIRM will delete all snapshots and Return you to the menu (an “All Images Deleted” message will be displayed on the LCD)

---

## Turning LED Lighting ON/OFF

Your Pebble HD has built-in LED lighting to illuminate your reading material.

It is also possible to turn OFF the built-in LED lighting, if desired. This may be useful when magnifying certain objects with a highly reflective surface, such as a watch or glossy photo. Use the following procedure to turn off the LED lighting:

1. With the Pebble HD power turned on, Press and Hold the BLUE **[Mode]** button then press the **[+]** SIZE together.

An icon will appear on the display to indicate the LEDs have powered off.



2. To restore the LED lighting use the same combination as before.



***Note: Each time the Pebble HD is powered on, it will automatically default to the factory setting with the LED lights ON.***

---

## Using the Clock & Time/Date Feature

The Pebble HD can maintain, and display, the current Time & Date once it is set. To set the current Time/Date please see pages 25 & 27 for Menu List and Instructions:

To View the clock on live screen

- Press the **[MODE] + [ZOOM -]** *for more than 3 seconds*

To Return to live screen after checking the clock

- Press the **[MODE] + [ZOOM -]** *again for more than 3 seconds to exit.*

## Using the Carrying Case

For added protection, your Pebble HD includes a convenient carrying case with a belt clip (see *Figure 2*). This helps to protect your Pebble HD from accidental damage when “on-the-go”. When not using the Pebble HD, return it to the case for added protection. The carrying case is designed to be attached securely to your belt. Please ensure that your Pebble HD is in the folded position before inserting into the carrying case.

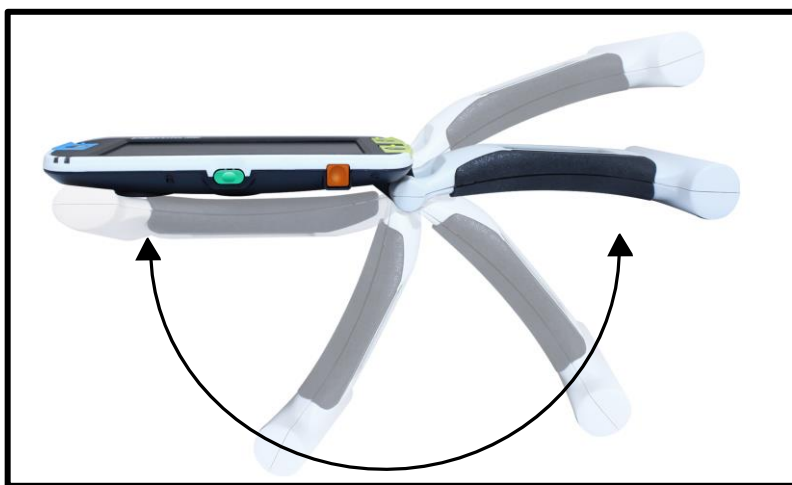


*Figure 2*

---

## Adjusting the Handle

The Pebble HD features a unique adjustable handle, which can rotate, allowing you to easily magnify a wide variety of objects in various positions. Refer to the illustration below for more information on how the handle can be positioned according to your needs.



**200° Rotation**

***Please refer to the next two pages for more information on how to adjust the handle of your Pebble HD and specific applications for use.***

---

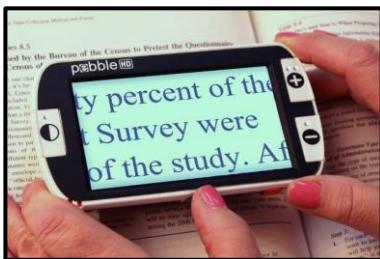
***Depending on your application, use the guidelines listed on the next two pages for more information on adjusting the handle for your particular magnification needs...***

### **Reading Position (fully closed)**

Close the handle completely into a folded position. Adjusting the handle in this position is convenient for reading a book, pamphlet or other printed text. (See Figure 1a & 1b)



*Figure 1a*



*Figure 1b*

### **Hand-Held Position (180° open)**

Open the handle as shown below. Adjusting the handle in this position is convenient for magnifying a wide variety of objects. (See Figures 2a & 2b)



*Figure 2a*



*Figure 2b*

---

## Writing Position (210° open)

Open the handle completely until it is fully rotated. Hold the handle flush with your writing surface. The viewing screen will tilt upward leaving enough room to write. (See *Figures 3a & 3b*)



*Figure 3a*



*Figure 3b*

## Hands-Free/Desktop Position

Open the handle at a slight angle, 180° or 210° for hands-free or desktop use. Adjusting the handle in this position is convenient when both hands are needed to perform other tasks. (See *Figures 4a, 4b & 4c*)



*Figure 4a*



*Figure 4b*



*Figure 4c*

### User Settings

User Settings is designed to allow users to set their own custom configuration and preferences. Upon exiting the User Settings submenu, all selected options are saved.

➤ **Languages**

Select from any of the available languages.

➤ **Audio**

Sound, Audible items including mechanical sounds

➤ **Display**

Visuals and display items including icons and graphical User Interface indicators, Extended Zoom & Color Modes

➤ **Time & Date**

Clock, Time and Date

### Product Settings

This menu allows user to configure product features such as:

**\*\*\*NOTE: After Factory Reset the System Setting may need to be reset based on your location.\*\*\***

➤ **Auto Standby**

Set Standby Times from 5, 10, 20, or 30 Minutes

➤ **Configure Buttons**

Enabled or disable the following buttons: Save, Freeze, Gallery, Image Panning, and Clock.

---

## Factory Settings

The Factory Settings submenu is designed to provide access to product and system information as well as reset the device to factory settings when needed.

### ➤ ***Product Information***

Product SN:  
Software RN:  
Boot RN:  
Board SN:  
Language Group-x

### ➤ ***Reset Deluxe Settings***

This option allows user to reset the device to its original factory default settings. All features are available through the Deluxe Setting

### ➤ ***Reset Basic Settings***

This option allows user to reset the device to its Basic or limited feature setting. In this mode the Freeze, Image Pan, Image Save, and Gallery options are all disabled.

## Image Gallery

Image Gallery is designed to provide user with a simple graphical user interface to view and select desired saved files and/or images for viewing. Saved files will be stored on the internal mini SD card. File names are time stamped to indicate time of capture/save. While in the Gallery a user can view their saved images (page 17) or delete these images (page 19).

### ➤ ***Display List of Saved Images***

### ➤ ***Delete All Saved Images***

---

## Setting the Clock Time/Date

The Pebble HD can maintain, and display, the current Time & Date once it is set. To set the current Time/Date:

1. Enter the Menu by pressing the **[MODE]** button and the Red **[FREEZE]** buttons (on the top and left side) together.
2. Press the **[FREEZE]** button to select 'User Settings'
3. Using the **[ZOOM -]** scroll until 'Time & Date' is highlighted
4. Press the **[FREEZE]** button to select 'Set Clock'
5. Again using the **[ZOOM -]** scroll until 'Set Date & Time' is highlighted
6. Press the **[FREEZE]** button to select 'Set Date & Time'

*\*\*Note: While you are setting the time and date the item that is ready to be 'set' will be highlighted\*\**

7. Using the **[ZOOM +/-]** change the highlighted value
8. Use the **[FREEZE]** button to set the current item and advance to the next item
9. Repeat steps 7 & 8 until all of the Time/Date values are set correctly\*
10. Once the current Time & Date have been set you can choose to enable/disable the '24 Hour Clock' format, and 'Date Format' options.
11. To enable/disable an option: Use the **[ZOOM +/-]** to highlight the desired option and press the **[FREEZE]** to select
12. Press the **[MODE]** button to return to normal operation.

---

## CONNECTING TO YOUR PC

### Transferring Images to your PC:

Your Pebble HD has the option to upload all of your stored images to your PC. This allows you to store or share these images. Follow the instructions to upload your saved images to the PC.

1. Plug the USB cable into the Pebble HD (See Figure 1) and the opposite end into the PC. (See Figure 2)
2. The Pebble HD will register as a normal USB-storage device with the drive name: Removable Disk or Pebble.



Figure 1

3. Double click the drive.
4. With the drive open double click on the Image folder.
5. Drag or copy the images to your desktop or the desired location on your PC.



Figure 2

### Firmware Update

To keep your Pebble HD up to date visit our software support page at:

<http://www.enhancedvision.com/support/software.html>

---

## Product Information

Product Information will display the technical information of the Pebble HD and also allows you to restore the Pebble HD back to its factory settings.

1. Press the [MODE] and **Red** [FREEZE] buttons to enter the Pebble HD Menu.
2. Press the [**Zoom +/-**] until “Factory Settings” is highlighted.
3. Press the **Red** [FREEZE] button to display the “Product Information” sub menu.
4. Press the **Red** [FREEZE] button again
5. While in these sub-menus you can:
  - a) View the Product Serial Number and firmware/software revisions
  - b) Restore the default settings of the Pebble HD by pressing the **Red** [FREEZE] to “Factory Restore” your device to Basic or Deluxe Configurations.

## Master Reset

If the Pebble HD is powered on, but is unresponsive – ‘Press and Hold’ the [Mode] button and press the ‘Orange’ button to reset the Pebble HD. Press the Green power button to power the Pebble HD on again.

*\*Note- Pebble HD must be disconnected from power to utilize the Master Reset.*

## No power to the unit

- *Can you power the unit using the included AC adaptor? (Pages 10-11)*
- *Is the power supply properly connected to a surge protector or an AC outlet (mains)? (Page 10)*

## Video image on LCD is blurry or not clear

- *Clean the LCD display and/or camera lens using the included cleaning cloth.*
- *Adjust the distance of the Pebble HD from your reading material or adjust the handle angle as needed to improve image quality (focus)*
- *Try selecting different viewing modes to improve image quality (page 16)*

## Video image on LCD display is too bright/dark

- *The Pebble HD is designed to be used in moderate lighting conditions, preferably indoors. Bright lighting (or direct sunlight) may produce shadows and/or reduce visibility. Try moving to a more shaded area to improve image quality.*
- *Adjust the distance of the Pebble HD from your reading material or adjust the angle of the handle as needed to improve image quality (focus)*
- *Try selecting different viewing modes to improve image quality (page 16)*
- *Try adjusting the LCD brightness in the Display Submenu shown on (pages 24 & 25).*

---

## Batteries will not charge

- *Can you power the unit using the included AC adaptor? (Pages 10-11)*
- *Is the power supply properly connected to a surge protector or AC mains? (Page 10)*

## Unit turns off automatically

- *To conserve power, your Pebble HD will automatically go into standby mode after a user defined number of minutes of non-use. This is not a malfunction. (Page 24)*

## Pebble HD begins to make a “beeping” sound

- *Approximately 15 minutes before shutoff the battery icon (Critical Battery) will be displayed for 2 seconds – at this point ‘Status Indicator #2’ will blink, indicating low battery .*

*If the battery is nearly empty, and ready to shutoff, the battery icon will be displayed with a partial ‘Red’ bar. At this point if the Pebble HD is not plugged in within 1-2 minutes it will turn off.*

## Unit becomes warm to the touch

*Your Pebble HD integrates a camera, LCD and battery charging unit inside a very small package, but is designed to be completely safe and does not pose a risk of fire or damage. It is normal for the Pebble HD to become warm (sometimes, very warm) after extended periods of use. However, this is completely normal and does not indicate a malfunction.*

# SPECIFICATIONS

---

## Features:

- Lightweight, portable design
- 200° adjustable handle
- 28 selectable viewing modes
- 7 levels of magnification for Pebble HD  
(4.5x, 5.5x, 7.8x, 9.4x, 13.4x, \*16.2x, \* 20x ) \*Extended Zoom Feature
- Image “Freeze” mode
- Integrated battery charger
- Power save mode (after 3 minutes of non-use)

## Display:

- Type: 4.3” diagonal TFT display, 16-bit
- LCD Brightness: 500cd/m2 (at full brightness)
- Viewing Angle: ~60°

## Physical Dimensions:

~ 5.5”L x 3.1”W x 1.25” H (with handle closed for Pebble HD 4.3”)

~ 10.2”L x 3.1”W x 1”H (with handle fully extended for Pebble HD 4.3”)

**Weight:** ~ 7.1 oz. for Pebble HD 4.3”

**Warranty:** 2 years

*Magnification ranges listed above are with the adjustable handle in the closed position. Minimum magnification may be reduced to 2x when the adjustable handle is fully extended.*

---

**Environment:**

- Operating Temperature: 32 ° – 122°F (0° – 50°C)
- Storage temperature: -4° – 140°F (-20° – 60°C)

**Battery:**

- 1x 3.7V Li-Ion rechargeable battery, 3100mAh (included in Pebble HD)

**Estimated Charge times (using rechargeable batteries):**

~4 hours (standby mode), ~ 5.5 hours (live mode), ~ 9.5 hours (PC USB)

**Estimated Usage Times (using rechargeable batteries):**

(Fully charged battery)\*\*

- ~ 2.5 to 3 hour battery life (depending on LCD Brightness setting) (rechargeable battery included)
- ~ 500-1000 charge life cycles

**Wall adapter:**

- UL/CE rated
- Input: 100-240VAC 50/60Hz
- Output: 5VDC, 2.1A max load

**Unit:**

- Input: 5VDC, 2.1A max load

*\*To prevent condensation, do not use the unit for 1 hour after transporting the unit from extreme cold to room temperature.*

*\*\*All times listed are approximate. Actual Charging and Usage times may vary depending on the life cycle remaining on the battery, LCD brightness setting and other variable factors.*

***In the interest of continuous product improvement, specifications and/or minimum system requirements are subject to change without prior notice.***

### **Enhanced Vision Pebble HD Warranty Policy**

Enhanced Vision products are designed to give you the highest quality image, convenient features, ease of use and reliable service. The Pebble HD has been inspected and tested prior to shipping.

Enhanced Vision warrants the Pebble HD against defects in material and workmanship under normal use for two

(2) years from the date of original purchase.

Enhanced Vision, at its option, will at no charge either repair the product or replace it during the warranty period. There are no other expressed or implied warranties accompanying this product.

### ***This warranty policy does not cover:***

- a) Defects or damage from misuse, use in other than normal and customary manner, accident or neglect;
  - b) Defects or damage from improper operation, maintenance, installation, adjustment, alterations or modification;
  - c) Defects or damage from spills of food or liquid;
  - d) All plastic surfaces and all other externally exposed parts that are scratched or damaged due to normal use;
  - e) Damage due to operation of the Pebble HD with equipment not supplied or designed by Enhanced Vision.
- You must provide proof of purchase, bearing the date of purchase, in order to receive warranty service.

- 
- Anyone using this product does so knowingly assuming certain risks, due to the need to utilize vision enhancement devices.
  - A 2-year extended warranty option is available within 12 months from the date of purchase. Please contact Enhanced Vision for detailed information.

## **Service Process**

In the event that technical support or repair service is needed, please contact your local Enhanced Vision representative or the Enhanced Vision warranty service center. If warranty service is required, please contact Enhanced Vision at (800) 440-9476 Monday through Friday, between 8 a.m. and 5 p.m. Pacific Standard Time (PST) to request a return authorization number.

**Warranty repairs will not be accepted without a valid return authorization number.**

**You may wish to keep the original product packaging in case warranty service is required. The manufacturer cannot provide packaging for warranty repairs.**

**NOTE:** Please completely fill out and send in the enclosed warranty registration card.

### DaVinci



DaVinci is a high performance desktop video magnifier (CCTV), featuring HD, text-to-speech (OCR) and a 3-in-1 camera. With HD you will experience high definition color and contrast giving you a beautiful, crystal clear picture and vibrant **colors**. **Experience the joy of reading with our new** text-to-speech feature. DaVinci will read any printed text aloud with the push of a button.

Magnification:

24" LCD: 2x (minimum) - to 80x (maximum)



---

### Merlin ultra HD



Merlin ultra HD's camera technology produces an even truer, more natural image. Easily read books and magazines, read and write letters, manage your financial records, view color photos, do crossword puzzles, and even pursue a favorite hobby.



Magnification:

20" LCD: 1.9x (min) to 51.2x (max)

22" LCD: 2.1x (min) to 55.9x (max)

24" LCD: 2.3x (min) to 61.2x (max)

---

### Merlin elite



#### See and hear the difference!

Merlin elite is a high performance desktop video magnifier (CCTV), featuring HD and text-to-speech (OCR). High definition color and contrast provides a beautiful, crystal clear picture and vibrant colors. Merlin elite's unique design allows for a wide field of view, displaying more text on the screen.

Magnification: 2.4x - 70x



---

## Acrobat HD ultra LCD



Acrobat HD ultra LCD is a complete system featuring a 3-in-1 Sony HD camera with a 20", 22", 24", or 27" high resolution H D LCD producing maximum picture detail for clear, vivid color display. The adjustable arm, tilting screen, and rotating capability allows the camera to be positioned at any angle for optimal viewing. A built-in handle allows for easy transport.

Magnification: 24" LCD: 2x (min.) – to 80X (max.)



---

## Smart Reader



A Full Page reader that makes reading enjoyable again! Easy-to-use, Smart Reader boasts a lightweight portable sleek design with a user friendly console. Position your document and press a button, in seconds Smart Reader begins reading aloud. Connect Smart Reader to a T V or monitor and enlarge your captured image to follow along as it reads. Perfect for work, home, school, vacation and on the go.



---

## Transformer



Transformer is the most flexible and portable solution for reading, writing and viewing magnified images at any distance. Compatible with popular magnification software and the latest Windows\* operating systems, the Transformer's unique design is perfect for work, home or school. Weighing less than 3 pounds. Battery operated up to 4 hours. 28 custom color select modes.

Magnification: 2..4X – 30X (based on 17" screen)



---

## Amigo HD



Amigo HD is a truly portable desktop magnifier. Optimal viewing is achieved with a tilting 7 inch viewing screen. Amigo HD provides 1.4x to 14x digital magnification and the lightest weight in its class. Amigo HD has an integrated battery and can be taken anywhere.



---

## Accessories

### Carrying Cases

Convenient cases for storage and transport of all Enhanced Vision products.

### Power Supplies

Spare power supplies for your Enhanced Vision products

### Pebble Stand

Hands-free stand for your Enhanced Vision products

---

## Contact Information:

**(US Office) Phone:** (714)465-3400 **Fax:** (714)374-1821

**(UK Office) Phone:** +44 (0)115 9442317

**Fax:** +44 (0)115 9440720

**(DE Office) Phone** +49 (0) 6078 969827-0

**Fax:** +49 (0) 6078 969827-33

## Technical Support:

Main Toll Free (800) 440-9476 ext. 3

Local Phone: (714) 465-3400 ext. 3

E-mail: [evsupport@enhancedvision.com](mailto:evsupport@enhancedvision.com)

If you intend on using your Pebble HD frequently on a variety of Materials, The Pebble HD Stand provides many advantages and benefits:

- 
- A person's hands are shown holding a small, white plastic seed packet labeled "Gardening Basics" with a yellow label featuring a green "A" and a green "B". The packet is being inserted into a larger, white plastic container labeled "Gardening Basics - How to Start a Garden". The container has a black label with white text that reads "Where to begin? First you need to decide where you will play a big part in begin a new garden is with the soil. Find the soil and the type of soil you have and what normal fee at your local Cooperative". The background shows a newspaper clipping with various articles, including one about "Gardening Basics" and another about "Gardening Basics" and "Gardening Basics".





The Pebble HD video magnifier is designed to enlarge and enhance images to improve the lives of people who have low vision. The extent to which Pebble HD can improve the ability to see images and text depends on a person's individual condition and level of visual impairment. The Pebble HD is not designed to restore vision, correct eye conditions or halt degenerative vision loss. An eye care professional can best determine the suitability of the Pebble HD for a patient's specific condition. For more information, please visit [www.enhancedvision.com](http://www.enhancedvision.com).

**[www.enhancedvision.com](http://www.enhancedvision.com)**  
**(800) 440-9476 (US Office, toll free)**  
**(714) 465-3400 (US Office)**  
**+44 (0) 115 9442317 (UK Office)**  
**Tel. + 49 (0) 6078 969827-0 (DE Office)**  
**Fax + 49 (0) 6078 969827-33 (DE Office)**

MAN-0775-02 Rev. X2  
August, 2015

Copyright © 2011 by Enhanced Vision All rights reserved.  
Product specifications subject to change without prior notice.